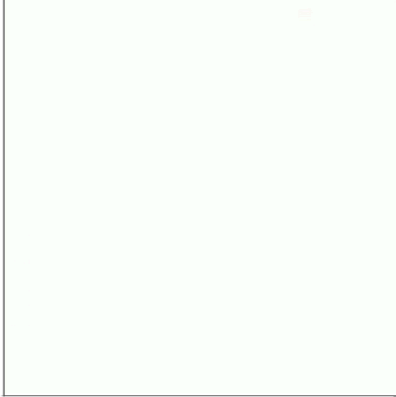


Compatto Panels

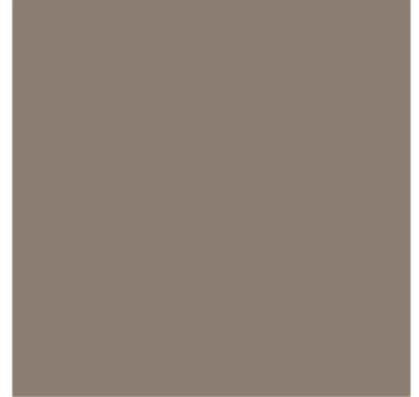
Bianco Cera



Cotton



Caffe



Bianco Frassino



Grigio Scuro



Eucalipto Chiaro



Rovere Carbone



Rovere Fine



Noce (Walnut)



Eucalipto Scuro



"Stoffe - Easy Clean"

Simply use water to remove tough stains without the need for chemical cleaning agents. Just use water for an easy clean!



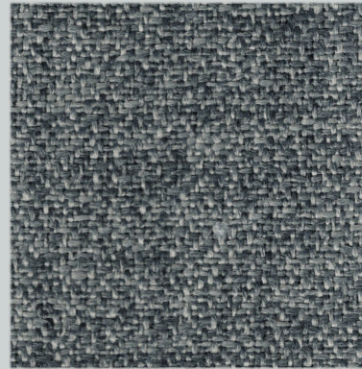
CLEAN
COL. 02



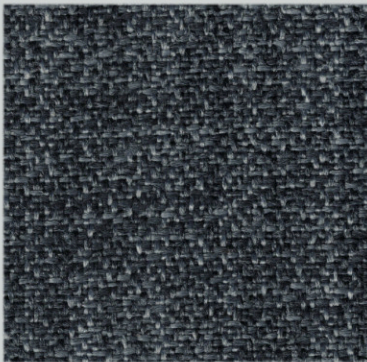
CLEAN
COL. 04



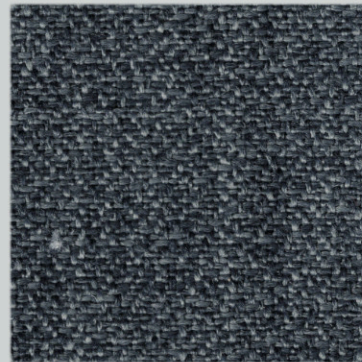
CLEAN
COL. 05



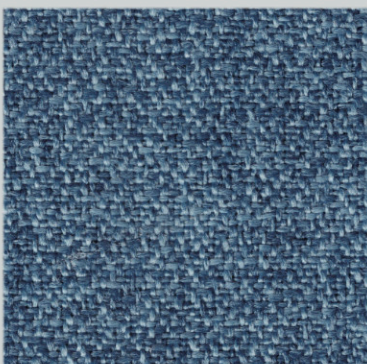
CLEAN
COL. 07



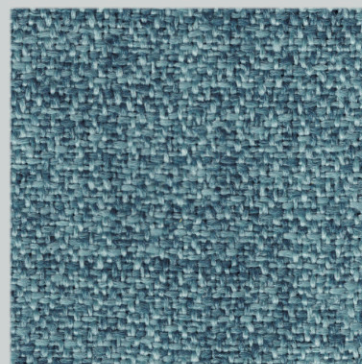
CLEAN
COL. 08



CLEAN
COL. 09



CLEAN
COL. 10



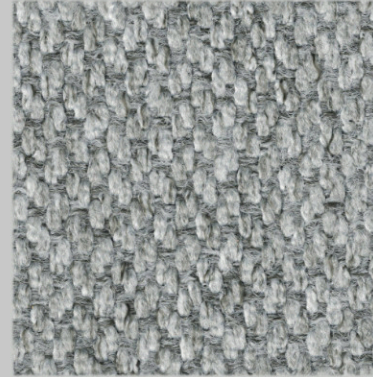
CLEAN
COL. 11

"Stoffe - Water Repellent"

Fabric covered with a special protective coating, forming a water repellent layer which prevents rapid fluid seepage.



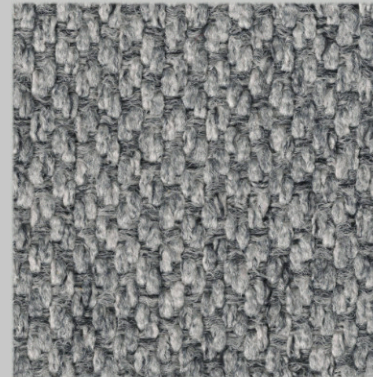
WATER
04



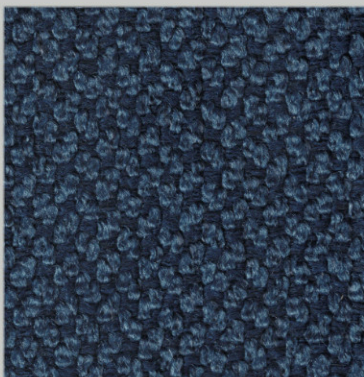
WATER
06



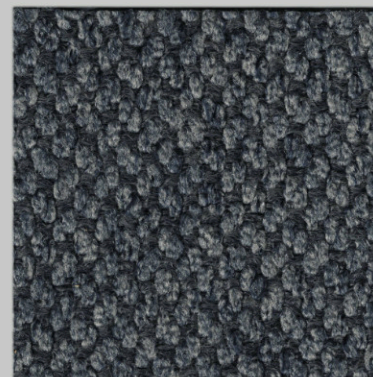
WATER
24



WATER
34



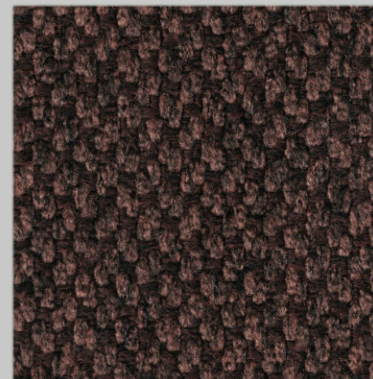
WATER
47



WATER
56



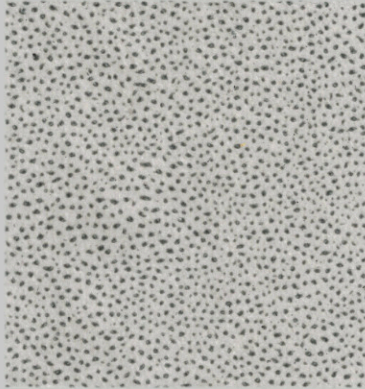
WATER
63



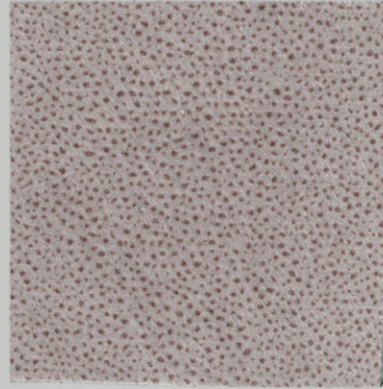
WATER
74

"Stoffe - Pet Friendly"

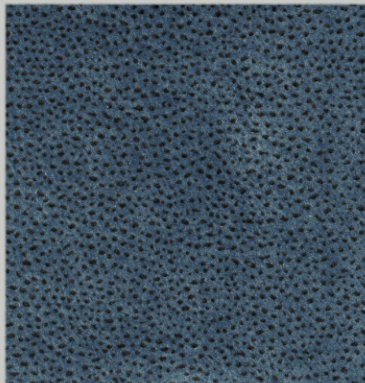
Material build that allows easy animal hair removal while preventing it from penetrating the fabric.



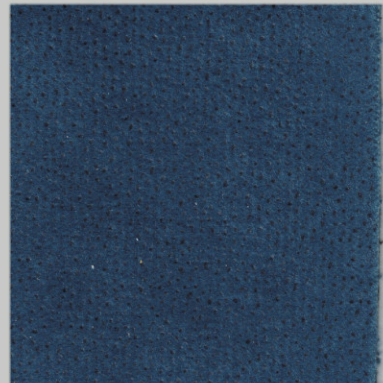
PET
03



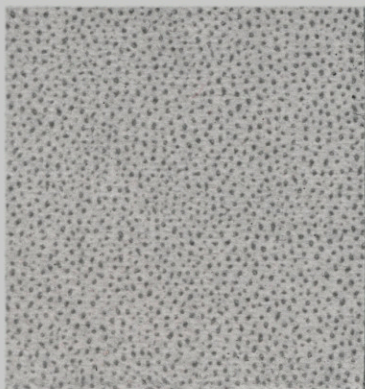
PET
11



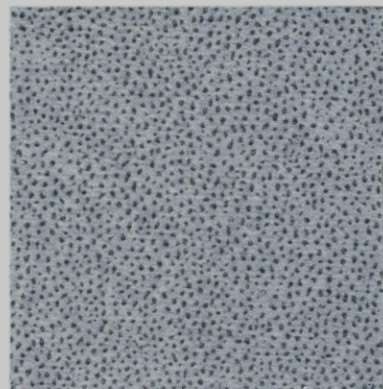
PET
73



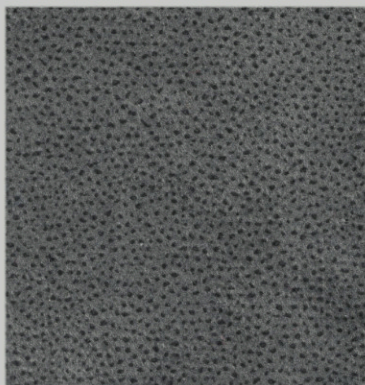
PET
77



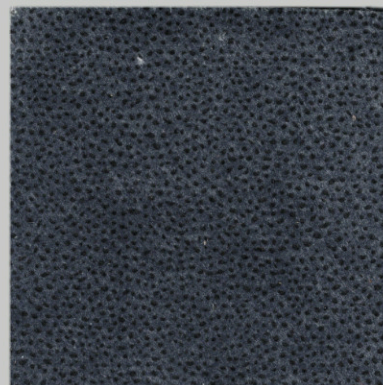
PET
83



PET
85



PET
92



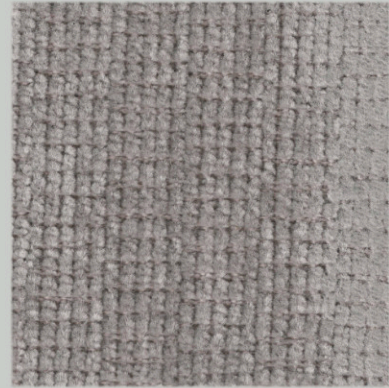
PET
97

"Stoffe - Recycled"

Thirty seven recycled PET bottles turn into 1 meter of fabric and the whole manufacturing process is less harmful to the environment.



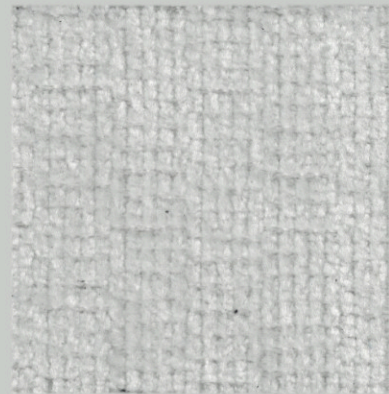
ECO
08



ECO
20



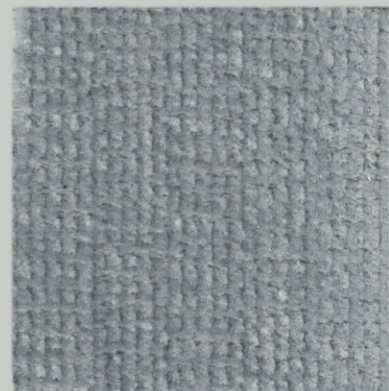
ECO
28



ECO
80



ECO
83



ECO
85



ECO
90

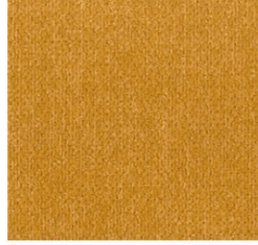


ECO
97

"New Bronx"



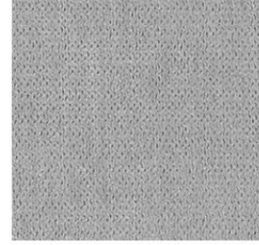
YELLOW



MOSTAZA



ORANGE



LIGHT GREY



MOSS



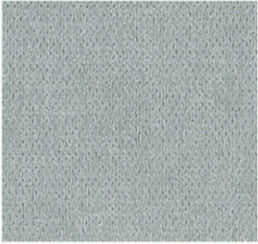
GREEN



BORDEAUX



JEANS



WATER GREEN



TURQUOISE



PETROL



PURPLE



BEIGE



TAUPE



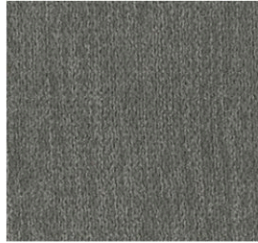
ASH



OCEAN



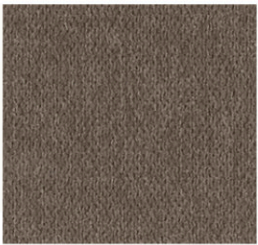
CAMEL



ELEPHANT



DARK GREY



TABAC



BROWN

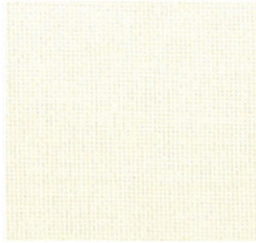


BLACK

"Kenya"



WHITE



NATA



BEIGE



CAMEL



TAUPE



YELLOW



ORANGE



DARK BEIGE



BLUE



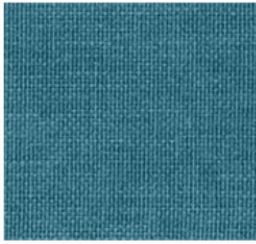
RED



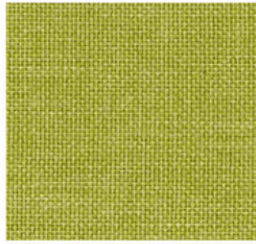
BORDEAUX



TRUFA



TURQUOISE



GREEN



DARK BROWN



BROWN



LIGHT GREY



BLACK



MIXED BROWN



DARK GREY

KENYA

FABRIC

Technical Specifications / Specifiche tecniche

Roll Width Altezza del rotolo	140 cm (+/-3%)	
Roll Length (average) Lunghezza (media)	40 / 60 m	
Surface Composition / Comp. Superficie	100% Polyester	
Backing Composition / Comp. Base	100% Polyester	
Weight Peso	345 g/lm (+/-5%)	
Tensile Strength Resistenza alla trazione EN ISO 13934-1	Warp / Ordito: 1300 N	Weft / Trama: 1000 N
Tear Growth Resistance Resistenza allo strappo EN ISO 13937-3	Warp / Ordito: 132 N	Weft / Trama: 100 N
Seam Slippage Resistance Margine resistenza cucitura EN ISO 13936-2	Warp / Ordito: 2,5 mm	Weft / Trama: 2,5 mm
Abrasion Test Resistenza all'abrasione EN ISO 12947-1,2	> 20.000	
Pilling Resistenza al pilling EN ISO 12945-2	5	
Colour Fastness to Rubbing Solidità del colore allo strofinio EN ISO 105-X12	Dry / Secco: 5	Wet / Umido: 5
Colour Fastness to Artificial Light Solidità del colore alla luce artificiale EN ISO 105-B02	5	



INDOOR

Applications & Features / Applicazioni e Caratteristiche



Breathable
Traspirante



Fire Proof Norms / Norme di resistenza al fuoco
BS 5852 Part I - Cigarette Test - PASS
EN 1021-1 - Cigarette Test - PASS
CA Tech. Bull. 117:2013 / NFPA 260 - Cigarette Test - PASS



Respects the environment using the application of new technologies in the production process
Rispetta l'ambiente grazie all'applicazione delle nuove tecnologie nel processo produttivo



Clean and Care recommendations / Raccomandazioni per pulizia e cura



WASH



BLEACH



DRY



DRYCLEAN



IRON

- Frequent wash may affect the performance of the product.
- To remove dust use a vacuum cleaner.
- Any stain, spills or soiling should be cleaned up promptly with a neutral soap solution using a cloth in smooth circular movements.
- We do not accept responsibility for any damage resulting from inappropriate use, chemical cleaning or additional impregnation.

- I frequenti lavaggi possono influire sulla prestazione dell'articolo.
- Per rimuovere la polvere utilizzare un aspirapolvere.
- Ogni macchia o sporcizia devono essere puliti immediatamente con una soluzione di sapone neutro utilizzando un panno con movimenti circolari regolari.
- Non si accettano responsabilità per eventuali danni derivanti da un uso improprio, pulizia con prodotti chimici aggressivi o impregnazione con prodotti non idonei.

- The analytical results are referred only to the sample tested.
- Discoloration and colour deviations tolerated by permissible industrial standards do not constitute reasons for claims.
- Colour migration may occur.
- We reserve the right to modify, at any moment and without notice any product specifications.

- I risultati analitici sono riferiti esclusivamente al campione provato.
- Alterazione del colore sono tollerate secondo gli standard industriali e non costituiscono motivo di contestazione.
- Possibilità di migrazione del colore.
- Ci riserviamo il diritto di modificare, in qualsiasi momento e senza preavviso le specifiche del prodotto.



NEW BRONX

FABRIC

Technical Specifications / Specifiche tecniche

Roll Width Altezza del rotolo	142 cm (+/-3%)	
Roll Length (average) Lunghezza (media)	40 / 50 m	
Surface Composition / Comp. Superficie	100% Polyester	
Backing Composition / Comp. Base	100% Polyester	
Weight Peso	426 g/lm (+/-5%)	
Tensile Strength Resistenza alla trazione EN ISO 13934-1	Warp / Ordito: 1511 N 49,6%	Weft / Trama: 425 N 17,0%
Tear Growth Resistance Resistenza allo strappo EN ISO 13937-3	Warp / Ordito: 55,7 N	Weft / Trama: 37,0 N
Seam Slippage Resistance Margine resistenza cucitura EN ISO 13936-2	Warp / Ordito: 3,0 mm	Weft / Trama: 2,5 mm
Abrasion Test Resistenza all'abrasione EN ISO 12947-1,2	20.000	
Pilling Resistenza al pilling EN ISO 12945-2	4-5	
Colour Fastness to Rubbing Solidità del colore allo strofinio EN ISO 105-X12	Dry / Secco: 4-5	Wet / Umido: 4
Colour Fastness to Artificial Light Solidità del colore alla luce artificiale EN ISO 105-B02	5	



INDOOR



Applications & Features / Applicazioni e Caratteristiche



Fire Proof Norms / Norme di resistenza al fuoco
BS 5852 Part I - Cigarette Test - PASS
EN 1021-1 - Cigarette Test - PASS
CA Tech. Bull. 117:2013 / NFPA 260 - Cigarette Test - PASS



Respects the environment using the application of new technologies in the production process
Rispetta l'ambiente grazie all'applicazione delle nuove tecnologie nel processo produttivo



Clean and Care recommendations / Raccomandazioni per pulizia e cura



WASH



BLEACH



DRY



DRYCLEAN



IRON

- Frequent wash may affect the performance of the treatment Stain Resistant.
- Any stain, spills or soiling should be cleaned up promptly with a neutral soap solution using a cloth in smooth circular movements.
- We do not accept responsibility for any damage resulting from inappropriate use, chemical cleaning or additional impregnation.
- I frequenti lavaggi possono influire sulla prestazione del trattamento Stain Resistant.
- Ogni macchia o sporcizia devono essere puliti immediatamente con una soluzione di sapone neutro utilizzando un panno con movimenti circolari regolari.
- Non si accettano responsabilità per eventuali danni derivanti da un uso improprio, pulizia con prodotti chimici aggressivi o impregnazione con prodotti non idonei.

- The analytical results are referred only to the sample tested.
- Discoloration and colour deviations tolerated by permissible industrial standards do not constitute reasons for claims.
- Colour migration may occur.
- We reserve the right to modify, at any moment and without notice any product specifications.
- I risultati analitici sono riferiti esclusivamente al campione provato.
- Alterazione del colore sono tollerate secondo gli standard industriali e non costituiscono motivo di contestazione.
- Possibilità di migrazione del colore.
- Ci riserviamo il diritto di modificare, in qualsiasi momento e senza preavviso le specifiche del prodotto.

